

Reverso 361°

Hydronic Fan Coil Units

Sophisticated style for heating, cooling, de-humidification and purification.



AER



Your projects, challenges and requirements are our focus. We have a dedicated team that can engineer tailored solutions for your commercial HVAC application.

Oceania Solutions Group is an Australian owned business that focuses on providing engineered HVAC solutions. We value the importance of relationships with our clients and partners. Our team enjoy collaborating and solving complex 'design and construct' projects for your business with our product solutions.

Oceania Solutions Group are proud of our extensive portfolio and experience within HVAC industry. From industrial applications through to commercial air conditioning installations for tropical and high humidity environments.

Operating throughout Australia, New Zealand and the South Pacific Islands, we provide engineered technical data and commercial support for a wide range of HVAC solutions.

Our experienced team of HVAC professionals work hand-in-hand with market leading suppliers of HVAC solutions and equipment.

With international accreditation from Eurovent, CTI, AHRI, TÜV and AMCA, our products are rigorously tested and certified, meeting Australian and New Zealand standards and regulations.

Partnering with trusted international suppliers, we are available to provide an engineered solution for your next project.

12cm: The Thinnest Fan Coil Unit

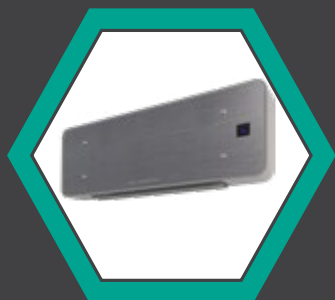
Each model of the REVERSO range holds the distinction of being the thinnest fan coil of the market.

12cm thick all along its full height, it is 10% thinner than any direct competitors in its market segment. A feature that distinguishes the unit is the absence of front intake grilles, thanks to the innovative ventilation system that improves battery performance working at negative pressure. Reverso, a true revolution in the field of fan coils, not a slogan but a fact.



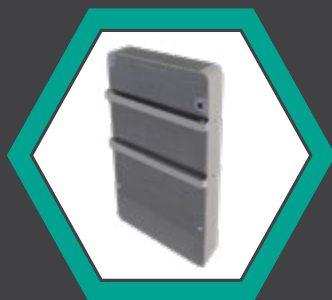
Four Ranges: Maximum Flexibility

Reverso consists of four product lines to get the maximum flexibility in every installation.



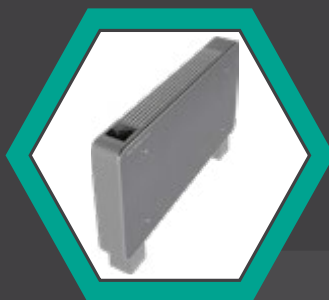
HW

The model Reverso HW is born for being installed high on the wall, in technical jargon High Wall.



BT

The model Reverso BT is expressly conceived for bathrooms but it can also be placed behind doors or in narrow spaces.



FS

The model Reverso FS is designed for easy installation. It can contemporarily be floor standing or horizontal on the ceiling, with right or left bindings. All this in a single product.



SM

The model Reverso SM is the low body of the range. With reduced height, it finds collocation in any position. Right or left connections in one product, maximum reversibility.



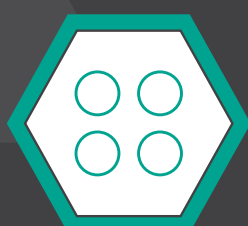
Reverso HW

The hydronic fan coil unit for high wall installations.

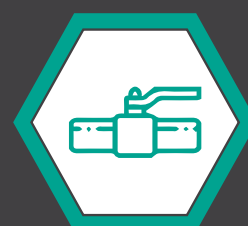
The features that set it apart from products of the same category are:



**Three sizes
400-600-800**



**2 and 4 pipe
installation**



**2-way and 3-way
by-pass valves**



**Easy installation
and maintenance**



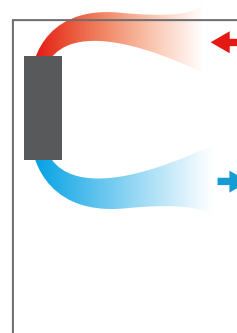
**Light and full
customisation on requests
based on quantity**

HW: High Wall

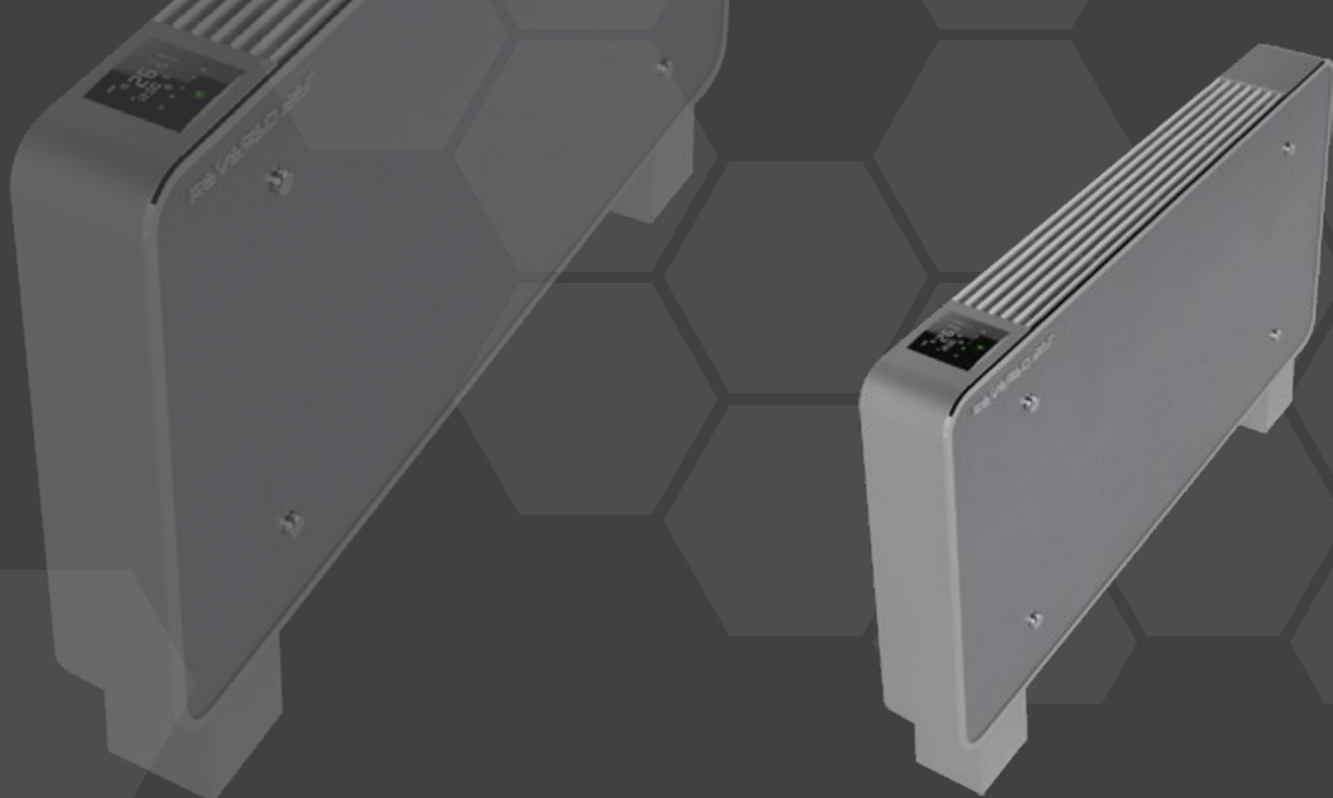
Technical data

- Wi-Fi controls for easy management by smartphone
- Double flap for accurate control of the air flow
- Eight speed programs
- Adjustable thermal power
- Cooling function
- Heating function
- Dehumidification function
- Purification function
- Adjustable thermal power from 0.5 to 4 kW
- Super thin thickness, only 12 cm
- Minimum noise level below the threshold of the audible, 20 dB (A)
- DC Inverter technology
- Low power consumption, only 4 Watts
- Modern design
- Front panel in tempered glass crystal
- Pleated stainless steel filters of unlimited duration
- Tangential aluminum fan for greater efficiency
- Controls with infrared handset or with remote wall panel
- Digital indicator of the room temperature

Model	U.M	HW400	HW600	HW800
Total cooling capacity	KW	1,20	1,70	2,45
Total heating capacity main exchanger	KW	1,68	2,45	3,30
Air flow rate (min-max)	m3/h	155-315	240-450	310-540
Electric power absorption (min-max)	watt	4-11	5-14	8-17
Minimum sound pressure (SPL)	db(A)	23,0	23,4	25,0
Width	mm	873	1065	1257
Height	mm	383	383	383
Depth	mm	122	122	122
DC Inverter motor low power		yes	yes	yes
Tangential aluminum fan		yes	yes	yes
Remote control		yes	yes	yes
LCD display		yes	yes	yes
Pleated stainless steel filter		yes	yes	yes
Front panel in tempered glass		yes	yes	yes
Machine frame in powder-coated steel		yes	yes	yes
Supply voltage	V-Hz	220-50	220-50	220-50
Optional				
Luxury touch screen built-in control		optional	optional	optional
Luxury touch screen built-in control with wi-fi		optional	optional	optional
Water temperature probe		optional	optional	optional
3-way valve kit with by pass for 2pipes		optional	optional	optional
3-way valve kit with by pass for 4pipes		optional	optional	optional
Straight 2-way valve kit		optional	optional	optional
Ground fixing feet		no	no	no
Front radiant panel		no	no	no
Horizontal installation tray		no	no	no
Rear aesthetic panel		no	no	no



High wall installation



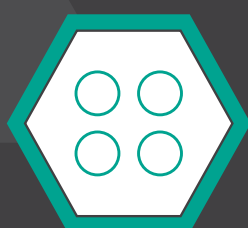
Reverso FS

The hydronic fan coil unit for floor standing or ceiling installations.

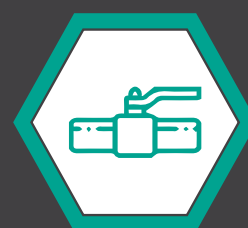
The features that set it apart from products of the same category are:



Four sizes
200-400-600-800



2 and 4 pipe
installation



2-way and 3-way
by-pass valves



Easy installation
and maintenance



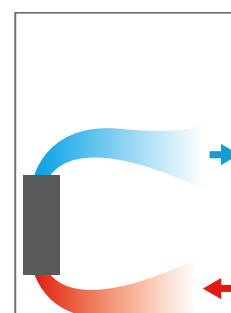
Light and full
customisation on requests
based on quantity

FS: Floor standing

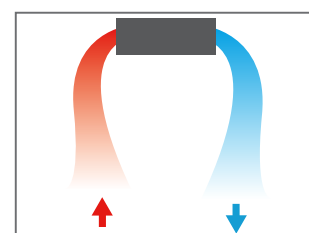
Technical data

- Wi-Fi controls for easy management by martphone via convenient App
- Adjustable air flow with movable grilles in extruded aluminum
- Eight speed programs
- All units with modulating thermal power.
- Cooling function
- Heating function
- Dehumidification function
- Purification function
- Thermal power from 0.5 to 4, 7 kW
- Super thin thickness, only 12 cm
- Minimum noise level below the threshold of the audible, 20 dB (A)
- DC Inverter technology
- Low power consumption, only 4 Watts
- Modern design
- Front panel in tempered glass crystal
- Double facade, front and rear, on request
- Radiant panel on request
- Pleated stainless steel filters of unlimited duration
- Tangential aluminum fan for greater efficiency
- Controls built-in or with remote wall panel
- Left or right hydraulic connections always available without extra work

Model	U.M	FS200	FS400	FS600	FS800
Total cooling capacity	KW	0,88	1,81	2,7	3,38
Total heating capacity main exchanger	KW	1,10	2,40	3,20	4,23
Air flow rate (min-max)	m3/h	80-180	155-315	240-450	310-540
Electric power absorption (min-max)	watt	8-17	4-13	5-14	8-17
Minimum sound pressure (SPL)	db(A)	20,5	21,6	23,5	21,7
Width	mm	681	873	1065	1257
Height	mm	553	553	553	553
Depth	mm	122	122	122	122
DC Inverter motor low power		yes	yes	yes	yes
Tangential aluminum fan		yes	yes	yes	yes
Remote control		no	no	no	no
LCD display		no	no	no	no
Pleated stainless steel filter		yes	yes	yes	yes
Front panel in tempered glass		yes	yes	yes	yes
Machine frame in powder-coated steel		yes	yes	yes	yes
Supply voltage	V-Hz	220-50	220-50	220-50	220-50
Optional					
Luxury touch screen built-in control		optional	optional	optional	optional
Luxury touch screen built-in control with wi-fi		optional	optional	optional	optional
Water temperature probe		optional	optional	optional	optional
3-way valve kit with by pass for 2pipes		optional	optional	optional	optional
3-way valve kit with by pass for 4pipes		optional	optional	optional	optional
Straight 2-way valve kit		optional	optional	optional	optional
Ground fixing feet		optional	optional	optional	optional
Front radiant panel		optional	optional	optional	optional
Horizontal installation tray		optional	optional	optional	optional
Rear aesthetic panel		optional	optional	optional	optional



Floor standing installation with or without feet



Ceiling installation



Reverso SM

The hydronic fan coil unit for floor standing installations with lowered height.

The features that set it apart from products of the same category are:



Four sizes
200-400-600-800



2 and 4 pipe
installation



2-way and 3-way
by-pass valves



Easy installation
and maintenance



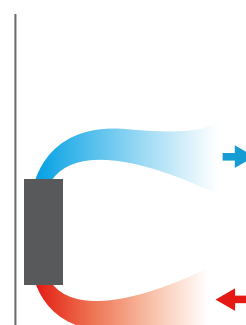
Light and full
customisation on requests
based on quantity

SM: Low profile

Technical data

- Wi-Fi controls for easy management by smartphone
- Adjustable air flow with movable grilles in extruded aluminum
- Eight speed programs
- All units with modulating thermal power.
- Cooling function
- Heating function
- Dehumidification function
- Purification function
- Thermal power from 0.5 to 3,6kW
- Super thin thickness, only 12 cm
- Minimum noise level below the threshold of the audible, 20 dB (A)
- DC Inverter technology
- Low power consumption, only 4 Watts
- Modern design
- Front panel in tempered glass crystal
- Double facade, front and rear, on request
- Radiant panel on request
- Pleated stainless steel filters of unlimited duration
- Tangential aluminum fan for greater efficiency
- Controls built-in or with remote wall panel
- Left or right hydraulic connections always available without extra work

Model	U.M	SM200	SM400	SM600	SM800
Total cooling capacity	KW	0,58	1,10	1,67	2,39
Total heating capacity main exchanger	KW	0,84	1,62	2,41	3,30
Air flow rate (min-max)	m3/h	75-170	150-305	230-430	300-520
Electric power absorption (min-max)	watt	3-12	4-13	5-14	8-17
Minimum sound pressure (SPL)	db(A)	20,6	22	23,6	20,8
Width	mm	681	873	1065	1257
Height	mm	383	383	383	383
Depth	mm	122	122	122	122
DC Inverter motor low power		yes	yes	yes	yes
Tangential aluminum fan		yes	yes	yes	yes
Remote control		no	no	no	no
LCD display		no	no	no	no
Pleated stainless steel filter		yes	yes	yes	yes
Front panel in tempered glass		yes	yes	yes	yes
Machine frame in powder-coated steel		yes	yes	yes	yes
Supply voltage	V-Hz	220-50	220-50	220-50	220-50
OPTIONAL					
Luxury touch screen built-in control		optional	optional	optional	optional
Luxury touch screen built-in control with wi-fi		optional	optional	optional	optional
Water temperature probe		optional	optional	optional	optional
3-way valve kit with by pass for 2pipes		optional	optional	optional	optional
3-way valve kit with by pass for 4pipes		optional	optional	optional	optional
Straight 2-way valve kit		optional	optional	optional	optional
Ground fixing feet		optional	optional	optional	optional
Front radiant panel		optional	optional	optional	optional
Horizontal installation tray		no	no	no	no
Rear aesthetic panel		optional	optional	optional	optional



Floor standing installation with or without feet



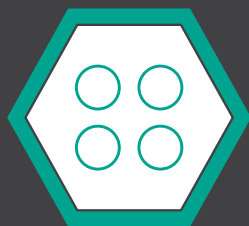
Reverso BT

The hydronic fan coil unit for bathrooms, wet rooms and small spaces.

The features that set it apart from products of the same category are:



**Easy installation
and maintenance**



**2 and 4 pipe
installation**



**Light and full
customisation on
requests based
on quantity**

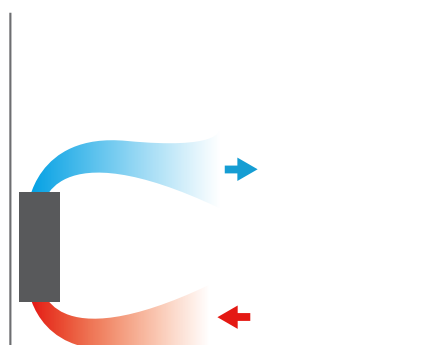


**2-way and 3-way
by-pass valves**

BT: Bathroom Technical data

- It can be installed behind the doors
- Wi-Fi controls for easy management by smartphone
- Adjustable air flow with movable grilles in extruded aluminum
- Eight speed programs
- Modulating thermal power through various fan speed settings
- Cooling function
- Heating function
- Dehumidification function
- Purification function
- Heating capacity up to 1.65 kW
- Super thin thickness, only 12 cm
- Minimum noise level below the threshold of the audible, 20 dB (A)
- DC Inverter technology
- Low power consumption, only 4 Watts
- Modern design
- Front panel in tempered glass crystal
- Radiant panel of 200Watt as standard
- Pleated stainless steel filters of unlimited duration
- Tangential aluminum fan for greater efficiency
- Control with infrared handset
- Smart display

Model	U.M	BT400
Total cooling capacity	KW	1,20
Total heating capacity main exchanger	KW	1,45
Air flow rate (min-max)	m3/h	120-225
Electric power absorption (min-max)	watt	4-11
Minimum sound pressure (SPL)	db(A)	19,1
Width	mm	565
Height	mm	1100
Depth	mm	122
DC Inverter motor low power		yes
Tangential aluminum fan		yes
Remote control		yes
LCD display		yes
Pleated stainless steel filter		yes
Front panel in tempered glass		yes
Machine frame in powder-coated steel		yes
Supply voltage	V-Hz	220-50
OPTIONAL		
Luxury touch screen built-in control		optional
Luxury touch screen built-in control with wi-fi		optional
Water temperature probe		optional
3-way valve kit with by pass for 2pipes		optional
3-way valve kit with by pass for 4pipes		no
Straight 2-way valve kit		optional
Ground fixing feet		no
Front radiant panel		yes
Horizontal installation tray		no
Rear aesthetic panel		no



**Wall installation at about
1 meter from the floor**

Controller

TOP controls, with black touch screen display and Wi-Fi function for easy management from smartphone via App.



The entire Reverso range is easy to manage thanks to the controls touch screen and convenient App. It is possible to manage a network of machines both for residential and for hotel structures, offices and public buildings.

The App is available for both iOS and Android systems

Notes

ENGINEERED
HVAC SOLUTIONS



oceania
SOLUTIONS GROUP

For more information on our latest
projects, visit www.oceania-group.com

PO Box 429
Cannon Hill QLD 4170
info@oceania-group.com

www.oceania-group.com

Click to follow
our socials

